

LAUSANNE

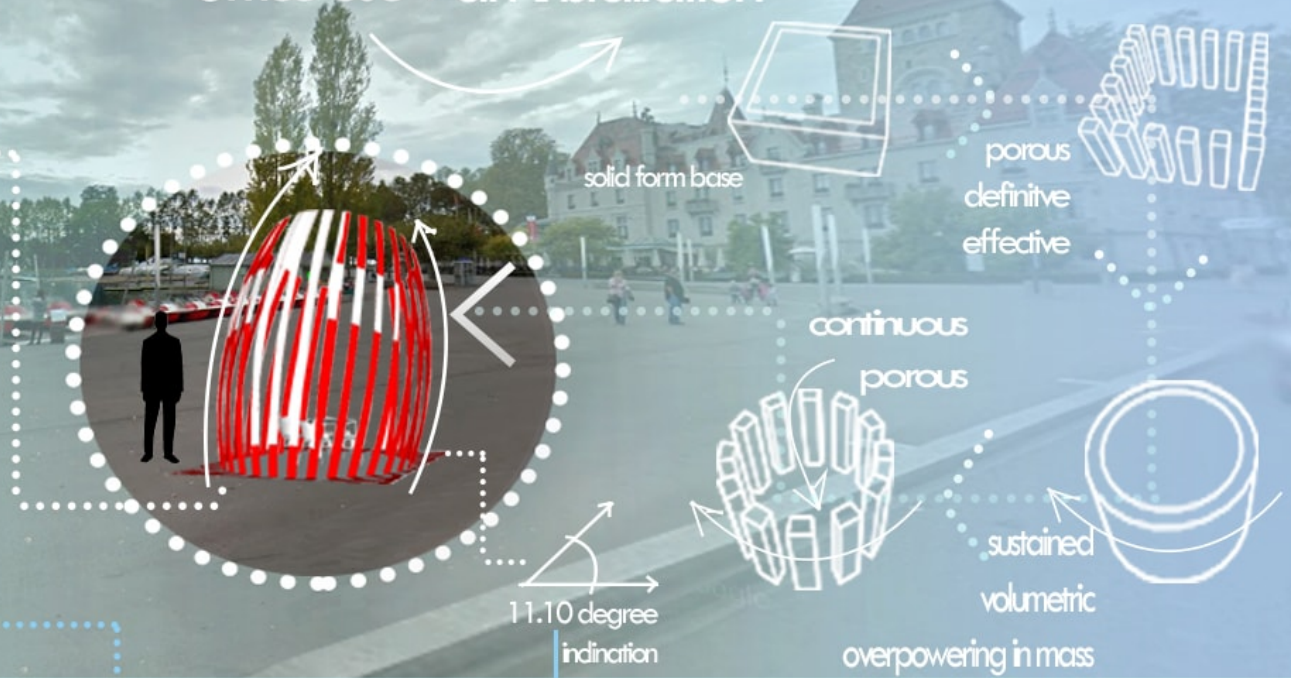
Petit a petit, l'oiseau fait son nid

ciedrick estinozo
ciedrick.estinozo@gmail.com

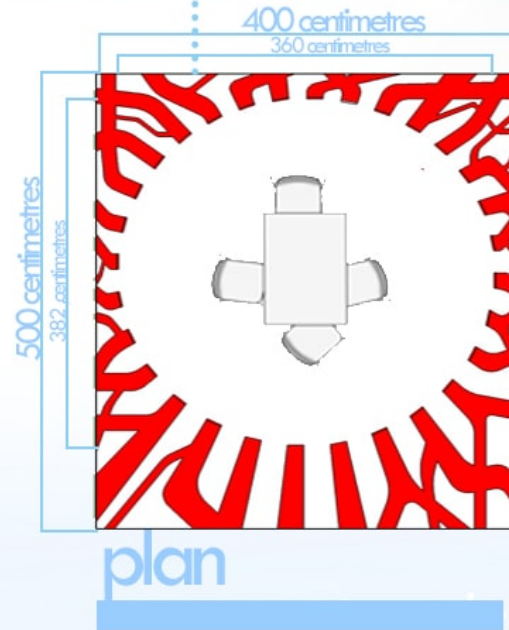
The final design was extracted from the idea that architecture, in its tangible form, is dominant over its eminent environment, in this case, water. It is made of elongated curvilinear spines that protrudes from the ground and collectively creates a bulging figure. This allows for visual porosity of the users, as well as ventilation and the goal of bringing back to lausanne the hosting of International Union of Architects (UIA).

fluid lines depicts lausanne's proximity to the lake

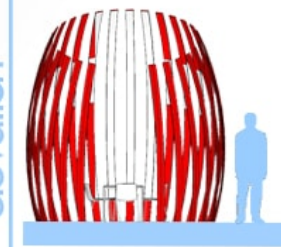
recyclability
office use + art installation



perspective

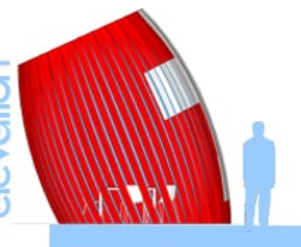


front elevation

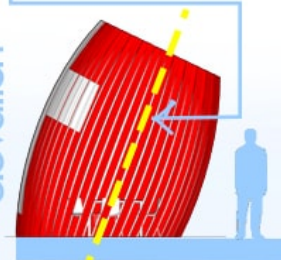


height 420 cm

right elevation



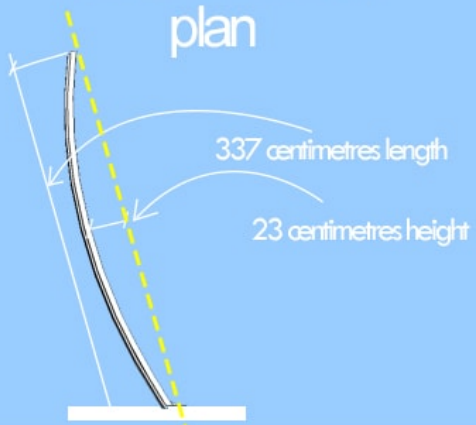
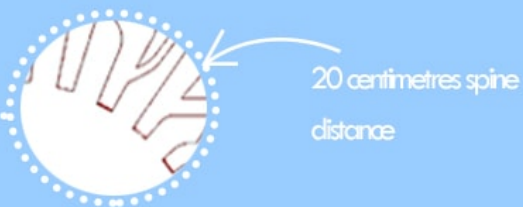
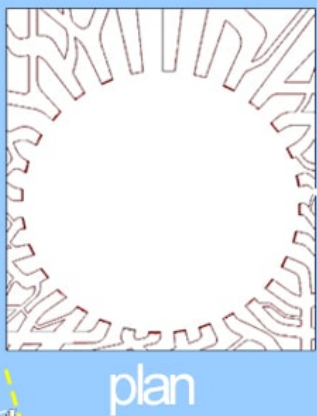
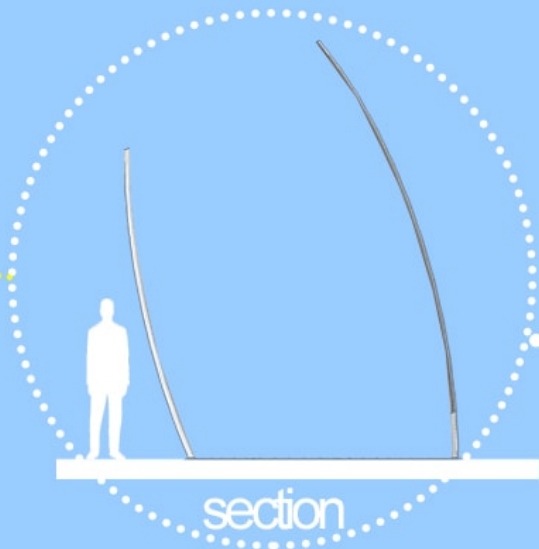
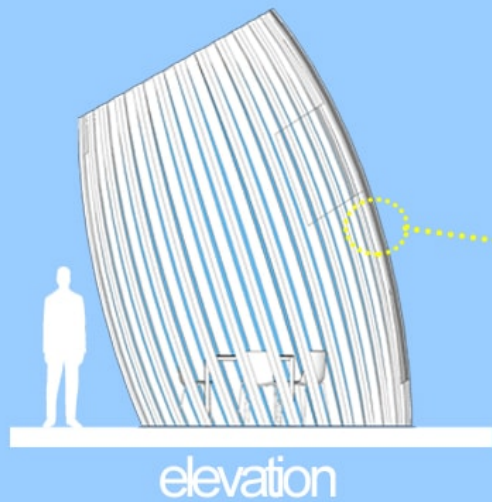
left elevation



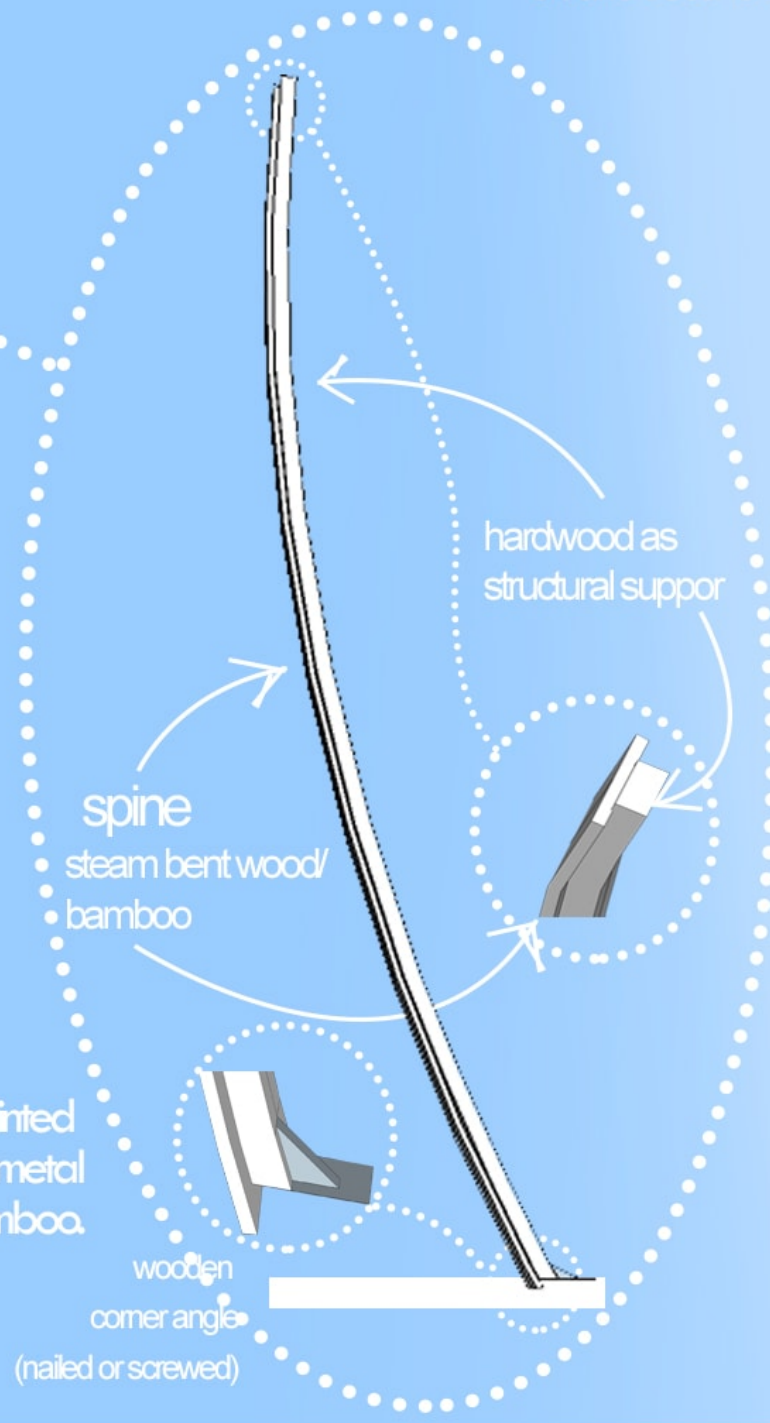
height 420 cm

rear elevation





*choice of material can be 3D printed engineering plastic, CNC cut lightweight metal or steam bent wood or bamboo.



how to do