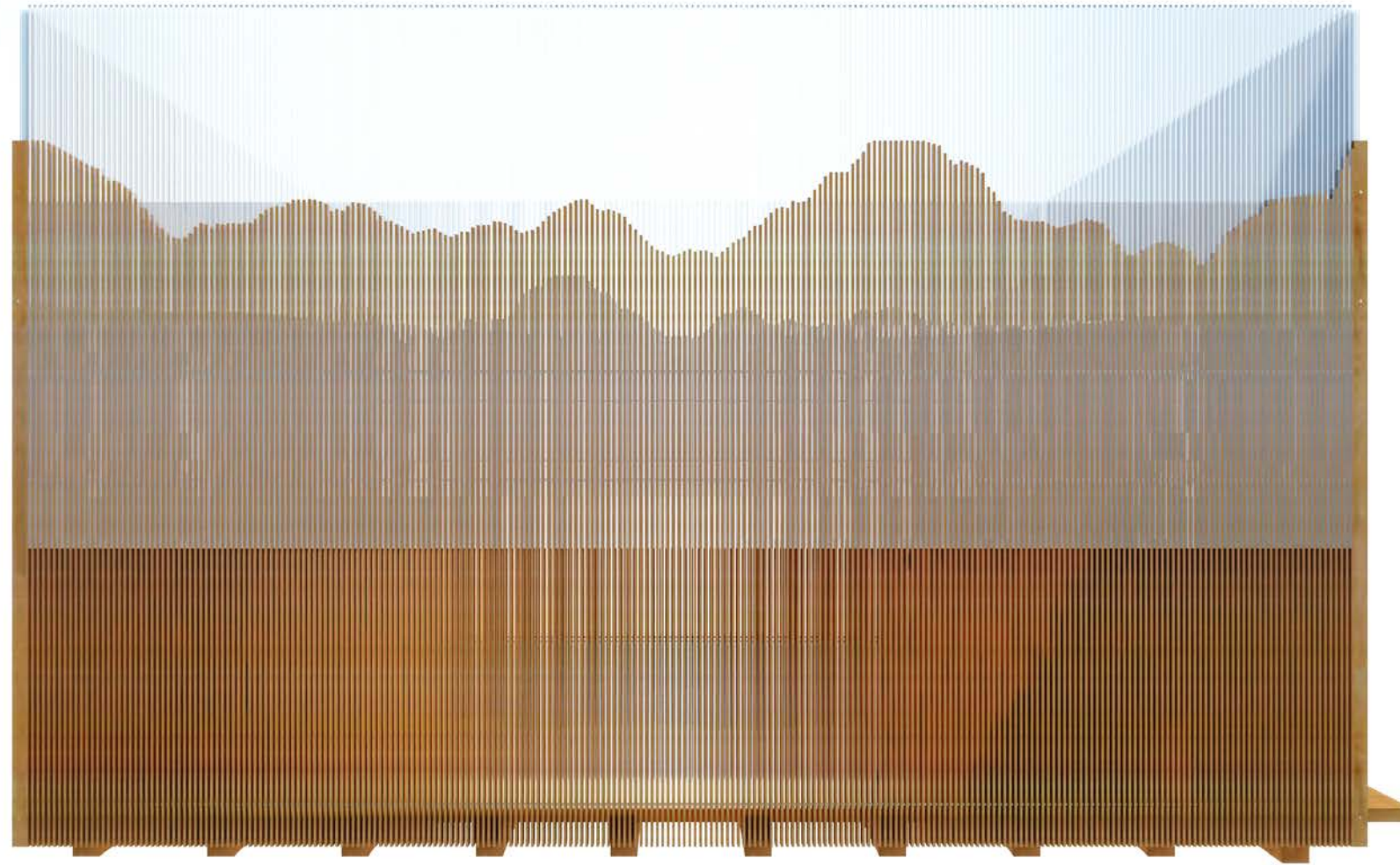
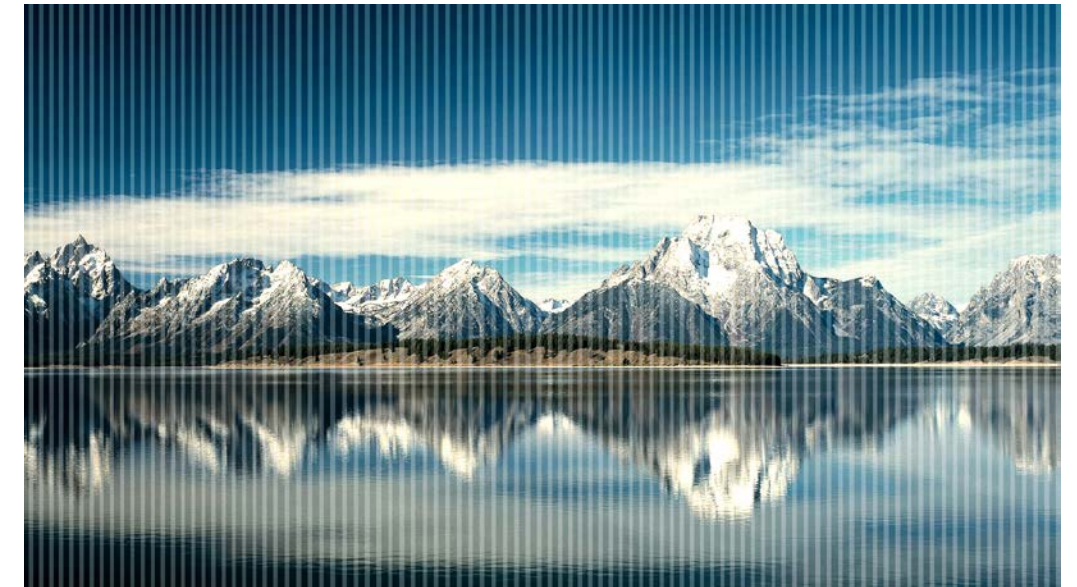


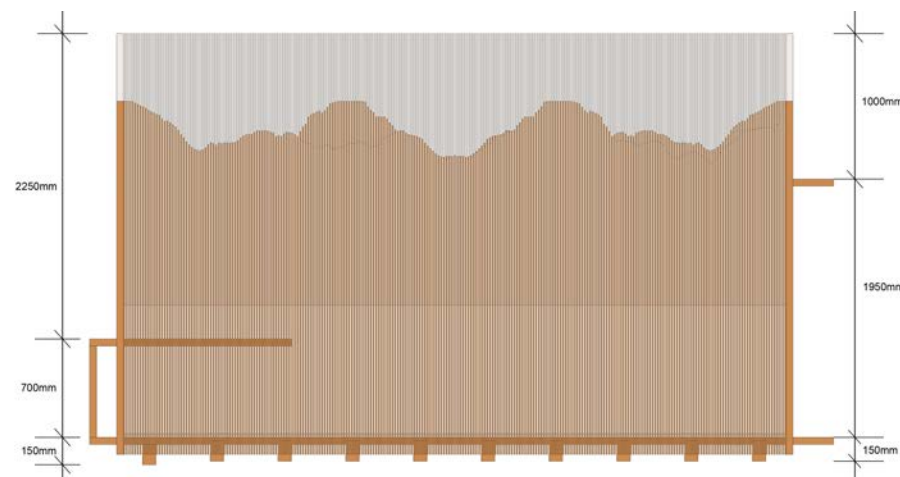
# “between”



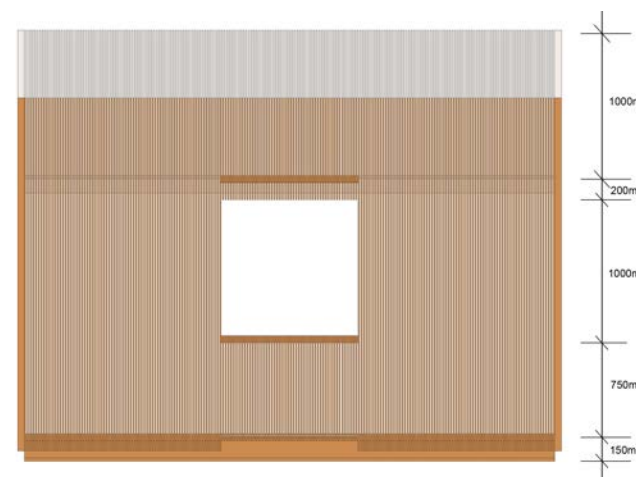
perspective 1



There are many ways, that the water exist in the nature, like cloud, rain, ice, snow and fog. Switzerland’s snow mountain und lake are famous in the world, the spirit with strictness and severity is also highly praised. How does the Swiss room show the ideas behind the topic of „Architecture and Water“ as a Lausanne’s candidate is the key to design the place-object. The space is surrounded by 4 facades with wood grating and Acrylic bars. Through ups and downs of wood grating und Acrylic bars and the ground covered a layer of PVC is the natural scenery in Switzerland simulated, just like the snow mountain and the lake with the reflection. These different components are easy to build and assemble. The table looks as if it belongs to the facade and ingeniously creates a window. we have used the simple material and designed a simple space but used a metaphorical expression to exhibit the quality, spirit and scenery of Switzerland.



elevation 1



elevation 2



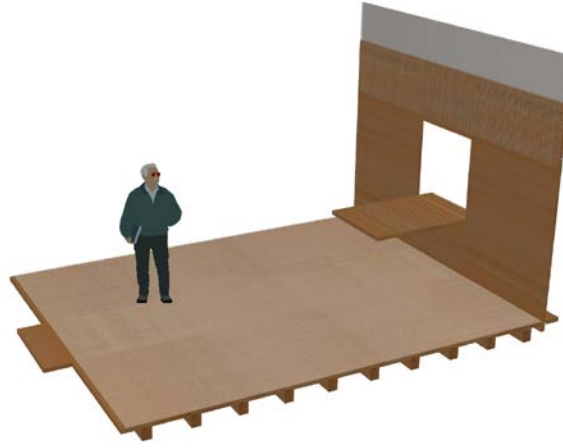
groundfloor



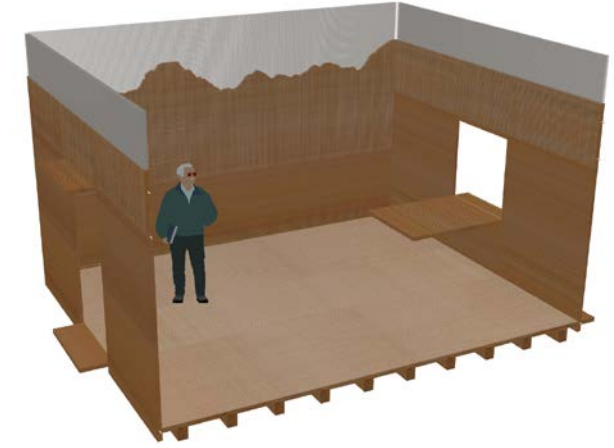
1



3



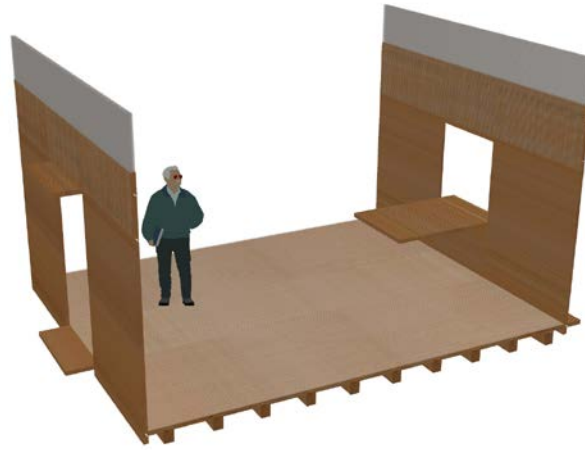
5



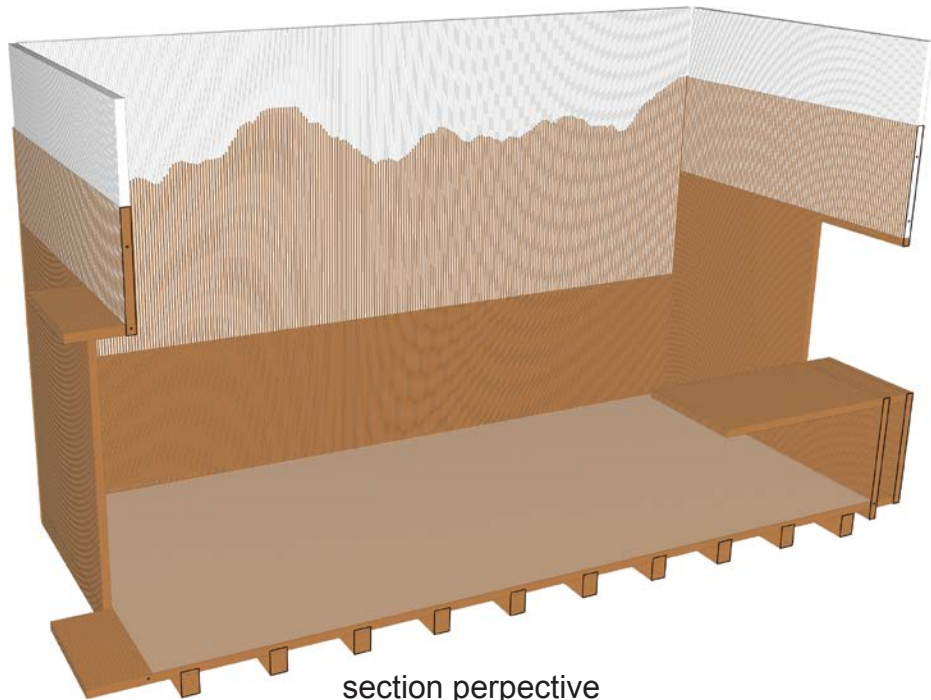
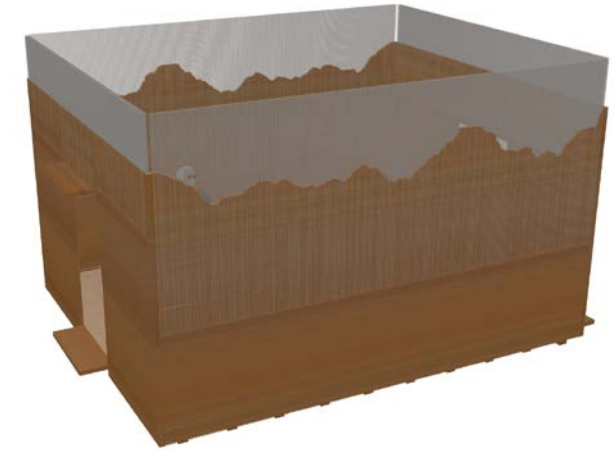
2



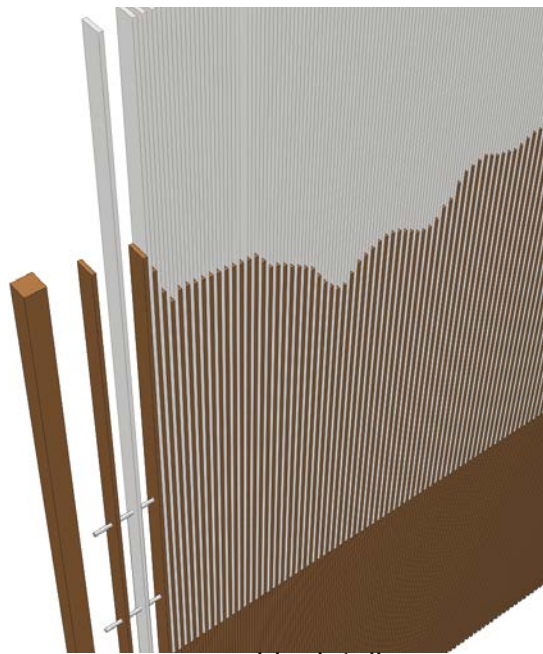
4



6



section perspective



assembly details



perspective 2