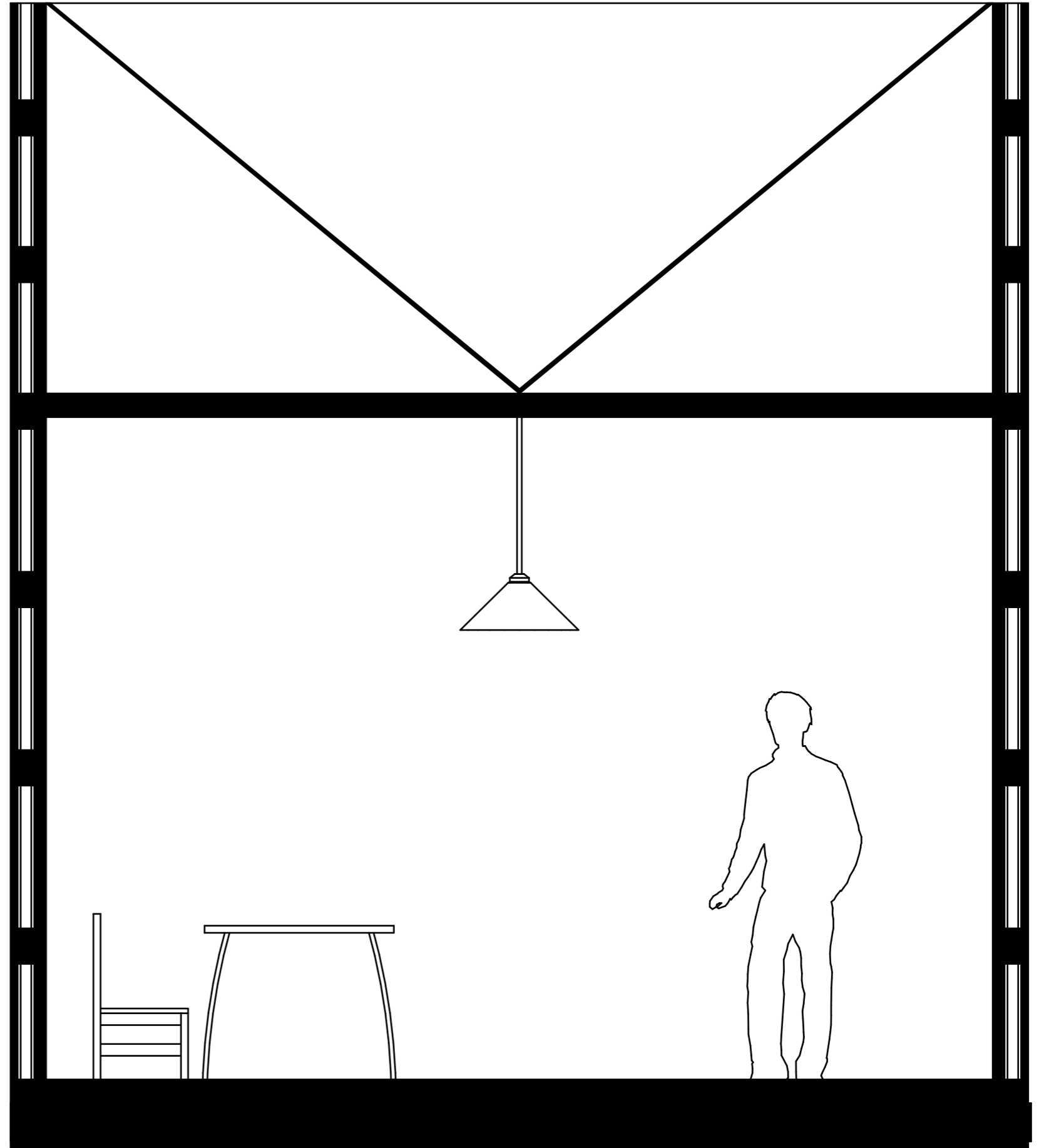
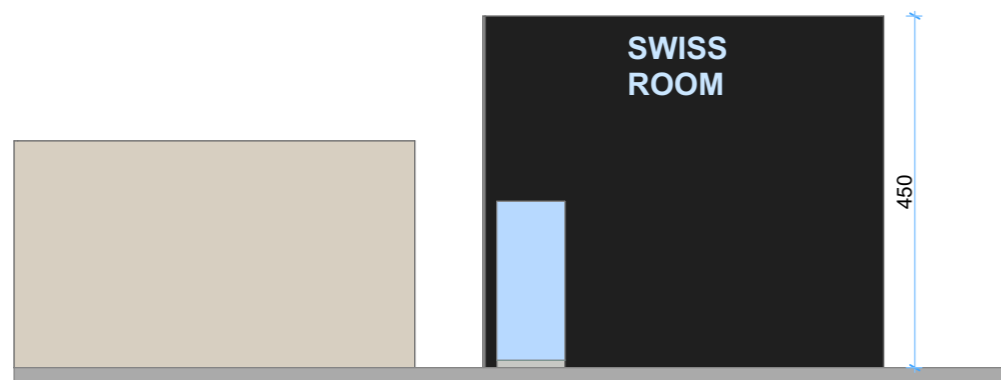
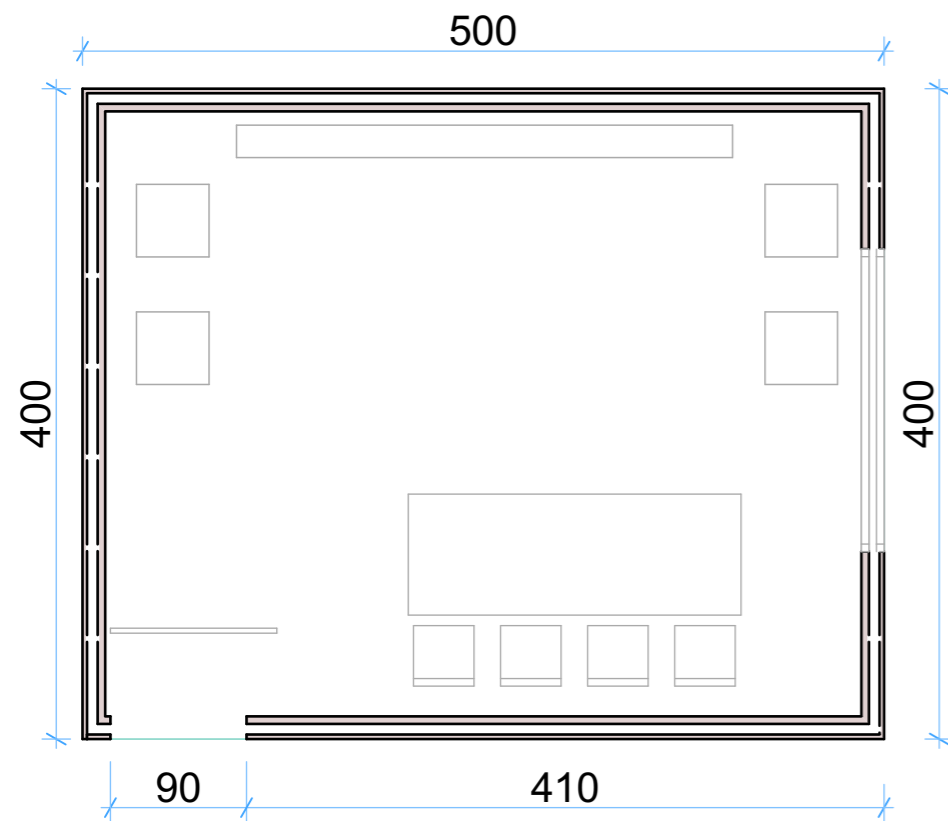
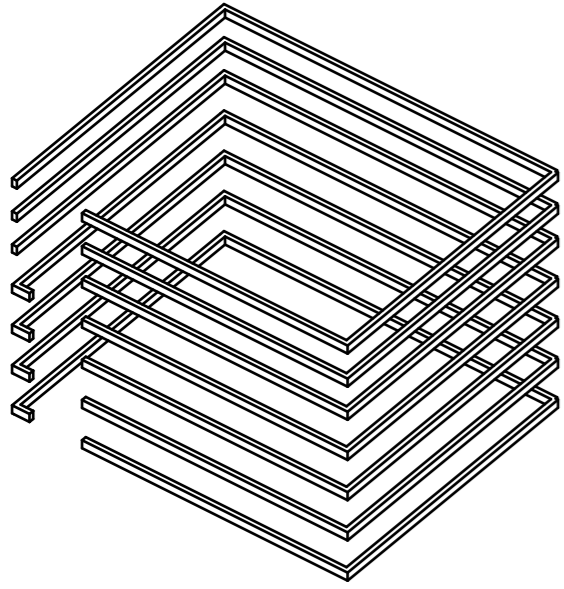


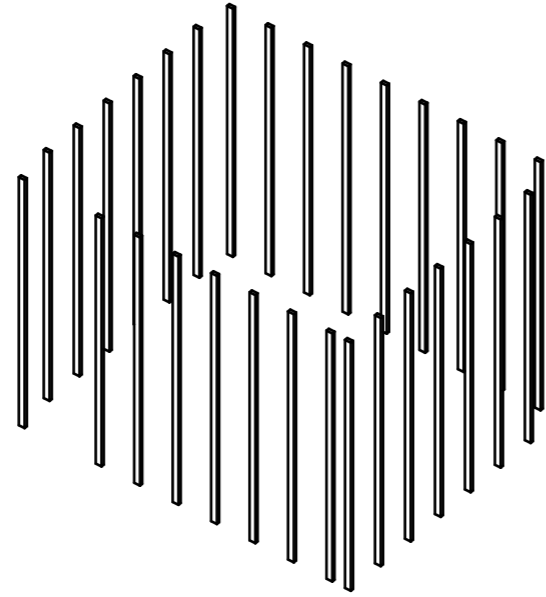
CURIOUS SWISS ROOM

Water shares inherent relationship with curiosity. To conquer and to know the world, for centuries people has set upon journeies to see whats other side of the horizon. I chose to use the phenomenon of horizon and boat to design the swiss room. Imagined as a small cabin on a boat this room shows a subdued face to the exterior. The black timber walls are there to call in visitors or create curiosity. However, inside the 'cabin' there is a earthly atmosphere of painted timber. The ceilings are much lowered to keep the sense of space awake for the visitors. The room is equipped with lighting, a table, four chairs and a projector to assist presentation and discussion.

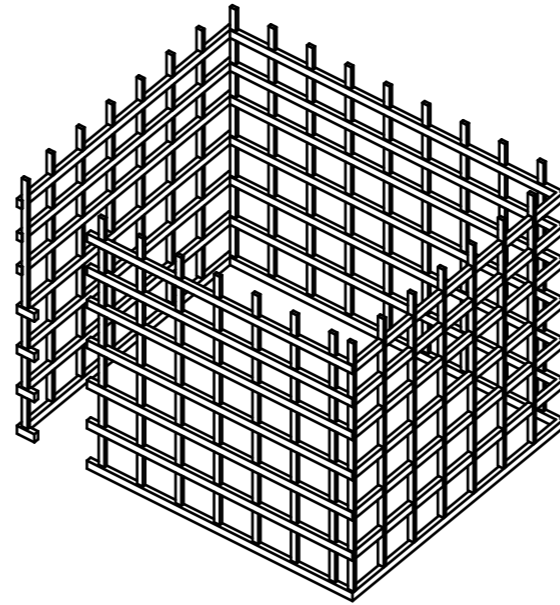




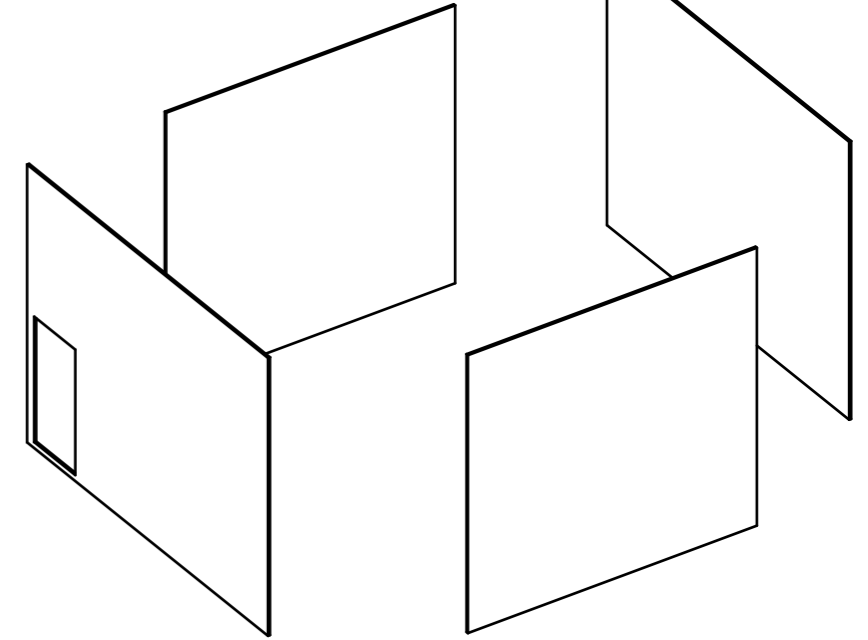
STAGE 01: SERIES OF 75X35 BEAMS ARE CONNECTED WITH 90X45 JOISTS TO CREATE THE SKELETON OF THE SWISS BOX.



STAGE 02: THE JOISTS WORKS AS MAIN STRUCTURAL COMPONENTS FOR WALL SUPPORT AND CEILING SUPPORT.



STAGE 03: AFTER THE SKELETON IS UP THEN A SIMPLE TIMBER SLATS WILL FORM THE OUTER SKIN AND PAINTED TIMBER PANEL WILL BE USED FOR INSIDE WALLS.



STAGE 04: ONCE THE WALLS ARE PLACED AND SIGNS OF CONSTRUCTION ARE GONE THE SWISS ROOM WILL STORE THE REQUIRED FURNITURE FOR THE EXHIBITION.

